

A decorative graphic on the left side of the slide consisting of five diamonds. The top-left, top-right, and bottom-right diamonds are solid teal. The bottom-left diamond is solid blue. The central diamond contains a photograph of a cloudy sky at sunset or sunrise.

The Healthcare Warehouse Ltd. The Healthcare Warehouse B.V.

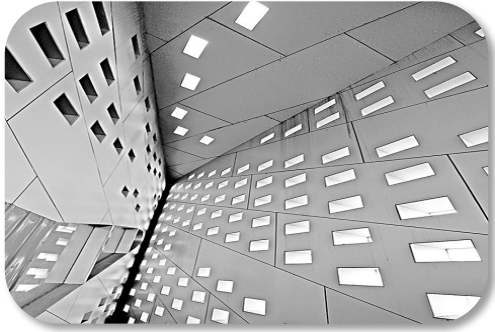
YOUR SINGLE POINT OF CONTACT FOR QUALITY, TRUST AND VALUE

The background of the slide features a series of overlapping, wavy, light gray lines that create a sense of depth and movement, particularly on the right side.

Content

- | | | | |
|----|--------------------------|----|-------------------------|
| 01 | Company Profile | 06 | MSM & DMSO |
| 02 | Strategic Partner | 07 | Collagen Peptide |
| 03 | Products Classification | 08 | Plant Peptide |
| 04 | Chitosan HCL | 09 | Amino Acid |
| 05 | Chitosan Oligosaccharide | 10 | Warehouse and Transport |

COMPANY PROFILE



The Healthcare Warehouse UK limited was established since 2010, we celebrate our 10 years of business and cooperation with partners who have worked very hard with us to develop our materials in their regions. Our gratitude to their professionalism and passion as well as their trust in our materials and our cooperation.

We continue to supply best quality of Join Care materials for human and animal health, our factory is EU approved establishment and this year we are working on GMP+ accreditation.

We continue to innovate with well established lab and research centre to expand our materials application in other sectors, we are proud to know some progress of Chitosan use in packaging sector, farming sector, agriculture and medical sectors.

We continue to provide promptly deliveries service, we are now have 2 warehouses in Netherlands, and 2 warehouses in UK.

STRATEGIC PARTNER



JIANGSU AOXIN



ZHEJIANG AOXING



HUBEI NUTRATIDE



HUNAN HANSEN

PRODUCTS CLASSIFICATION

Nutrition

D-Glucosamine HCL
D-Glucosamine Sulfate 2KCL
D-Glucosamine Sulfate 2NaCl
N-Acetyl-D-Glucosamine
D-Glucosamine HCL DC
D-Glucosamine Sulfate 2KCL DC
D-Glucosamine Sulfate 2NaCl DC
Chitosan food grade
Chitosan High Density
Carboxymethyl Chitosan
Chitosan HCL
Chondroitin Sulfate Sodium
(Shark,Marine,Avian)
Collagen
MSM/DMSO
Plant Protein Peptide
HMB CA
Amino Acid

Feed

D-Glucosamine HCL
D-Glucosamine Sulfate 2KCL
Chitosan feed grade
Chitosan High Density
Chondroitin Sulfate Sodium
(Shark,Marine,Avian)
Collagen
MSM
Plant Protein Peptide

Industry

D-Glucosamine HCL
D-Glucosamine Sulfate 2KCL
Chitosan industry grade

Agriculture

Chitosan
Chitosan HCL
Carboxymethyl Chitosan
Chitosan Oligosaccharide



Introduction Chitosan HCL in agriculture

- Chitosan HCL has good stability and strong bacteriostatic.
- Chitosan HCL can promote the absorption of nutrients and drugs in plant cells.
- Chitosan HCL have good film-forming property.

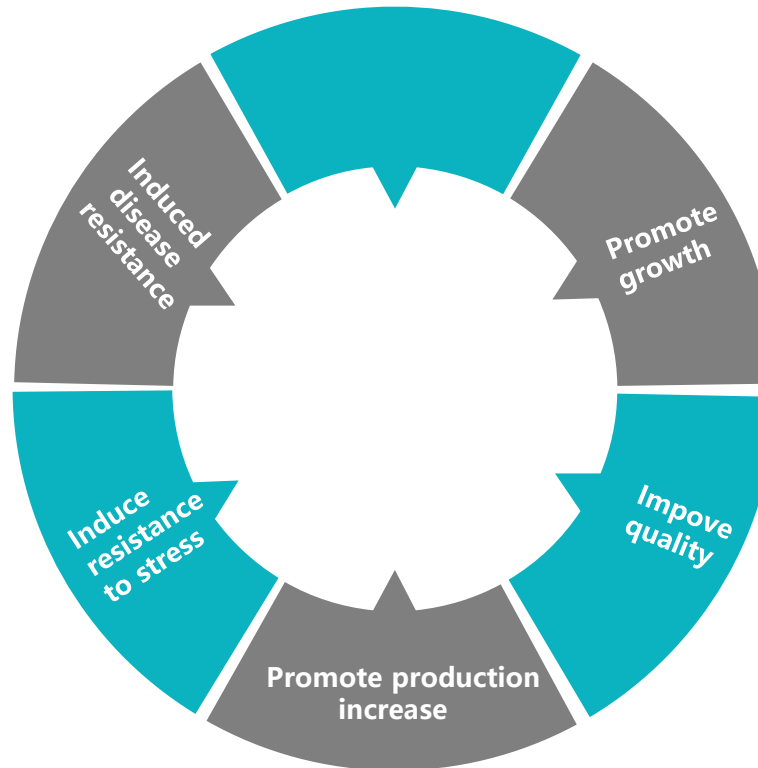
APPLICATION OF CHITOSAN OLIGOSACCHARIDE IN AGRICULTURE

Induced disease resistance

By inducing crops to produce a large number of disease resistance factors, effectively prevent the infection of viruses, bacteria and other pathogens, thereby reducing the disease.

Induce resistance to stress

By regulating the physiological and biochemical functions of plants under the conditions of cold and drought, the damage to plants caused by stress is greatly reduced, and the effects of adverse environmental factors on crops are reduced.



Promote growth

By regulating the balance of metabolism in crops, promoting the absorption of nutrients by the root system and increasing the level of chlorophyll metabolism, the photosynthetic efficiency can be regulated and the growth of crops will be promoted.

Improve quality

The quality of agricultural products was improved by increasing the content of chlorophyll, increasing the content of vitamin C and soluble sugar, and decreasing the content of titratable acid.

Promote production increase

By reducing the effects of diseases and stresses on crops, increasing the photosynthetic efficiency of plants, promoting the differentiation of plant organs and accumulation of nutrients, thus increasing the yield of crops.



MSM

MSM is an abbreviation for methylsulfonylmethane, which is a natural substance found in food and the human body. MSM is an inconspicuous sulfur molecule that exists in the atmosphere, plants, animals, and humans. Chemically, it is composed of 2 methyl molecular groups (consisting of carbon atoms and hydrogen atoms), one sulfur atom and two oxygen atoms. The weight of sulfur in its molecule accounts for one-third.

Air chemists believe that its molecular structure is the first tiny oxidation product formed by seaweed in the ocean sulfide cycle.

On land, many scientists have analyzed for many years and found that MSM is naturally present in animal tissues, food and human blood, adrenal glands and milk. MSM is also found in horses, rabbits and half of other species. MSM is a nutritional product that can improve immune function.

DMSO

MSM is made from DMSO.

DMSO is widely used in the world to treat arthritis, muscle and bone dislocation, severe headache and spinal cord injury, sports strain and other symptoms. In the United States, DMSO is used by the FDA to treat intermittent cystitis.

MSM has the remarkable therapeutic properties of DMSO, but does not have the unpleasant smell of DMSO. Between chemical medicines and natural medicines, MSM has freed itself from related clinical restrictions and achieved the mainstream of nutrient use. Now, its obvious benefits are loved by many people who are committed to natural pain relief without side effects.

COLLAGEN PEPTIDE NUTRATIDE®



Fish Collagen peptide

The small molecular fish collagen peptide, extracted from tilapia scale and skin by world's advanced biological cryogetic enzymatic hydrolysis technology, is widely used in food, cosmetics, and pharmaceutical products.

Type II Collagen peptide

It is made from fresh chicken chest cartilage and is extracted by advanced directed bio-enzyme digestion technology. It is rich in type II collagen.



Soybean Protein Peptide

A small molecular peptide obtained by using soybean protein as raw material, directed bio-enzyme cutting technology, and advanced separation technology. Compared with ordinary soybean, soybean peptide are more easily absorbed by the body without increasing the burden on the digestive organs.



Pea Protein Peptide

A small molecular peptide obtained by using a bio-synthesis enzyme digestion technique using pea and pea protein as raw materials. The pea peptide completely retains the amino acid composition of pea, contains 8 essential amino acids that the human body cannot synthesize by itself, and their proportion is close to the recommended mode of FAO/WHO.



Corn Protein Peptide

Corn protein peptide is a small molecular active peptide extracted from corn protein using bio-directed digestion technology and membrane separation technology. Widely used in food and health products.



Wheat Protein Peptide

A small molecular peptide obtained by using wheat protein as a raw material, through directed bio-enzyme digestion technology and advanced membrane separation technology. Wheat oligopeptides are rich in methionine and glutamine, and wheat oligopeptides are widely used in foods and health products.





01

Instantized Amino Acid

Instant BCAA;Instant EAA;Instant Leucine

02

Granulated Amino Acid

Granulate BCAA;Granulate Arginine;Granulate AAKG;Granulate Glutamine

03

L Series Amino Acid

L-Leucine;L-Arginine;AAKG;L-Citrulline;L-Cysteine HCL Mono;L-Glutamine;L-Phenylalanine

04

D Series Amino Acid

D-Aspartic Acid;D-Ribose

05

DL Series Amino Acid

DL-Methionine;DL-Phenylalanine;DL-Serine

06

N Acetyl Series Amino Acid

N-Acetyl-L-Cysteine;N-Acetyl-L-Glutamine;N-Acetyl-L-Tyrosine

07

Amino Acid Derivative

L-Arginine-L-Aspartate;L-Citrulline DL-Malate;L-Lysine-L-Aspartate;L-Ornithine-L-Aspartate

08

Other Amino Acids And Other Products

Beta-Alanine;GABA;Alpha Lipoic Acid;MCT Powder;D-Mannose

WAREHOUSE AND TRANSPORT

We have three warehouses.
Two warehouses are in UK and one
warehouse is in Netherlands.

We provide on-time delivery anywhere
in Europe, Goods in UK warehouse and
Netherlands warehouse are custom
cleared. We can provide you delivery
services base on door to door, or
warehouse collection or pick
up, whatever way suits you.



The background of the slide features a series of concentric circles in the center, with the word 'THANKS' in the middle. The entire slide is decorated with a pattern of wavy, overlapping lines in shades of gray, creating a sense of movement and depth.

THANKS